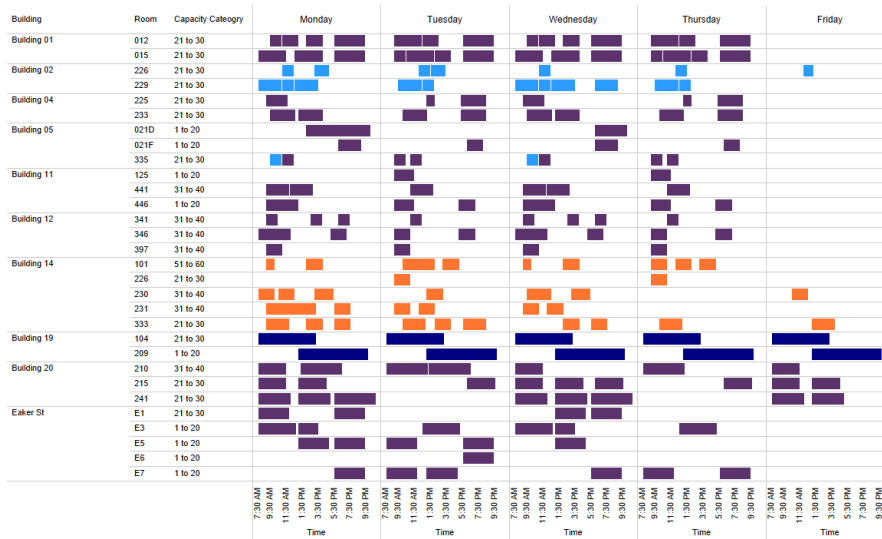


Sinclair College

Integrated Facilities Master Plan

Dayton, Ohio

Departmental Classrooms: Hour Utilization by Day and Time



Project Information

Completion Date
January 2025

Services Provided
Master Plan/Optimization
Instructional Space Utilization

As part of a large inter-disciplinary master planning team, Rickes Associates was engaged by Sinclair College to provide an instructional space utilization study and an overall campus optimization space needs analysis.

Sinclair College is a two-year institution located in Dayton, Ohio serving 18,000 headcount students (just under 6,000 FTE) across five campus locations. This master planning effort focused on its Dayton and Centerville sites. Sinclair College offers more than 300 degree and certificate programs, including specialized and technical areas of study that are in high demand in the Dayton region.

Rickes Associates conducted a campus-wide space utilization analysis for 980,000 ASF across a dozen buildings to determine the appropriate ASF to support the campus' projected enrollment goal of 6,300 FTE and identify opportunities for optimizing space through reassignment and realignment across campus by space type, i.e. classrooms, labs, offices, student space needs, campus needs, etc. The outcome identified a campus surplus of 13 percent distributed across classrooms, open labs, offices, central facilities, and the bookstore. However, a deficit was identified in student spaces, such as study spaces, lounges, and gathering areas.

Recommendations included reducing the 285 instructional spaces and 295,000 ASF of space, allowing for the redesign of classrooms and labs to meet current and changing pedagogical needs, and collocating disparate labs into a centralized Manufacturing Building, allowing Sinclair the opportunity to divest itself of a leased building. Summary recommendations were also included by building and by Academic Division. This assessment gives Sinclair the opportunity to realign its space and programs within the existing footprint.

At the time of the study, there were no identified plans for significant changes in core programs, enrollment, or personnel.